



John Carpenter
082 460 3838
john.carpenter@seeff.com

Contact Plettenberg Bay

044 5330311

Sun Centre
CNR Main & Church Street
Plettenberg Bay

On Show

12:00 to 14:00

Sunday, 06 April 2025

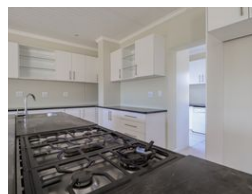
Directions

Follow the On show boards



ON SHOW

Web Ref RLS961911



R5,900,000

3 3 2

Monthly Bond Repayment R60,899.12
Calculated over 20 years at 11% with no deposit.

Transfer Costs R506,807.00 **Bond Costs** R65,785.00
These calculations are only a guide. Please ask your conveyancer for exact calculations.

Monthly Levy R3,450 **Monthly Rates** R2,500

MODERN BRACKENRIDGE HOME WITH MOUNTAIN VIEWS

JOINT MANDATE

This delightful Northeast Facing home in the ever-popular Brackenridge Estate with privacy and tranquil views over the countryside must be on your short list for viewing.

The house opens to an entrance hall. To the left you will find a passage leading to 2 well-appointed bedrooms and guest cloakroom with shower. On the right you are led to the open plan kitchen, lounge and dining room. The kitchen is designed for efficiency, with a centre island for food preparation, smeg stove, and sufficient supply of cupboards.

There is a large scullery, equipped with cupboards and space for 3 appliances. The open plan lounge...

Features

Pets Allowed Yes

Interior

Bedrooms	3
Bathrooms	3
Kitchens	1
Recep. Rooms	2
Furnished	No

Exterior

Garages	2
Security	Yes
Pool	No
Views	False

Sizes

Floor Size	250m ²
Land Size	1,847m ²

Extras

Eco Estate Security Gate Level Road Mountain View North East Modern Aluminium Window
Breakfast Nook Scullery Stove Fireplace Open Plan Patio Tiled Floors Garden Services
Irrigation System Totally Fenced Electric Gate Built In Braai Entrance Hall

