



**Ian Duncan**

Candidate Property Practitioner  
Registered with PPRA  
(FFC 202 371 487 12)  
076 814 6808  
ian.duncan@seeff.com



**Piet Maree**

073 059 0640  
pieter.maree@seeff.com

Contact Plettenberg Bay

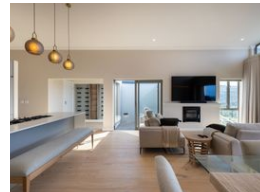
044 5330311

Sun Centre  
CNR Main & Church Street  
Plettenberg Bay

NEW



Web Ref RLS986142



**R6,736,000**

2 2 2

**Monthly Bond Repayment** R68,385.82

Calculated over 20 years at 10.75% with no deposit.

**Transfer Costs** R604,726.00 **Bond Costs** R70,535.00

These calculations are only a guide. Please ask your conveyancer for exact calculations.

**Monthly Levy** R2,500

### EDEN VIEW LIFESTYLE ESTATE

JOINT MANDATE

No Transfer Duty

Welcome to Eden View Lifestyle Estate, Plettenberg Bay's hidden gem where luxury and nature harmonize. Set amidst lush flora with spectacular views of the Bitou River Valley and Tsitsikamma Mountains, this estate offers an idyllic escape from the city's pace.

Designed for every stage of life, Eden View is ideal for families, young buyers, and retirees alike, bringing together community, convenience, and the renowned Plettenberg Bay lifestyle.

The Lifestyle Centre and Clubhouse provide an array of amenities: a state-of-the-art gym, indoor swimming pool, exciting padel courts, and a delightful restaurant—all just steps away.

With a dedicated on-site medical center managed by Medwell Health Care Services, residents enjoy seamless access to top medical care. The estate is powered by a central...

### Features

**Pets Allowed** Yes

#### Interior

Bedrooms	2
Bathrooms	2
Kitchens	1
Recep. Rooms	2
Furnished	No

#### Exterior

Garages	2
Security	No
Pool	No
Views	True

#### Sizes

Floor Size	195m <sup>2</sup>
Land Size	435m <sup>2</sup>

#### Extras

Security Complex Above Road Mountain North Aluminium Window Extractor Fan Granite Tops  
Stove Scullery Open Plan Tiled Floors Fireplace Totally Fenced Security Gate

