



Dirk Green
082 814 4508
dirk.green@seeff.com

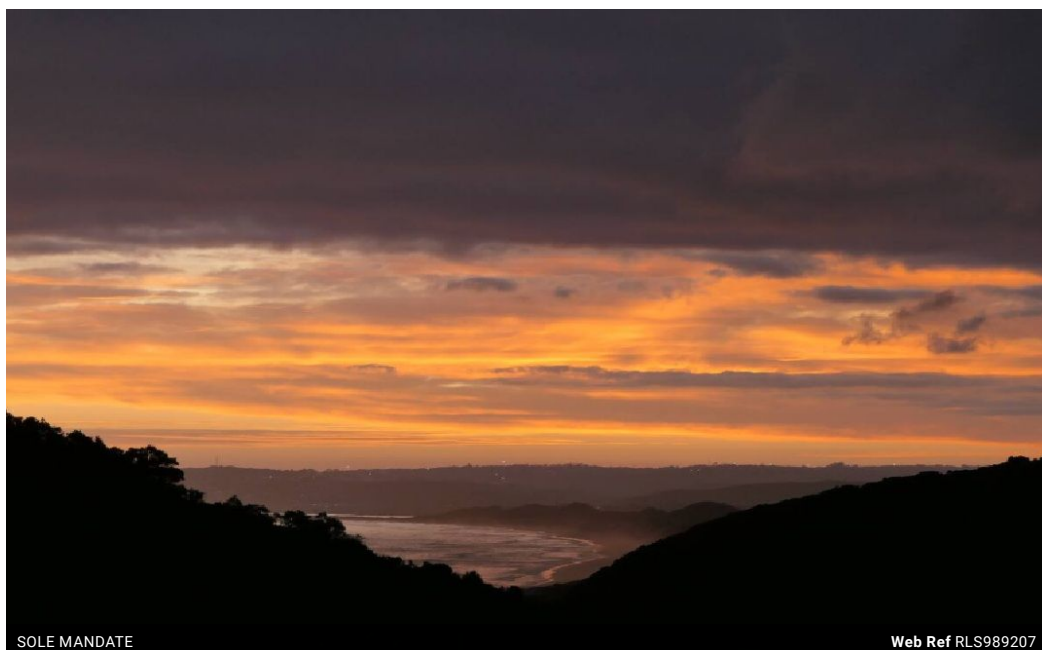


Elize Green
072 119 3710
elize.green@seeff.com

Contact Plettenberg Bay

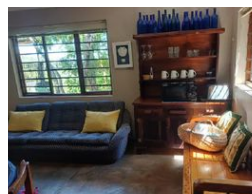
044 5330311

Sun Centre
CNR Main & Church Street
Plettenberg Bay



SOLE MANDATE

Web Ref RLS989207



R8,750,000

4 3 1

Monthly Bond Repayment R87,358.24

Calculated over 20 years at 10.5% with no deposit.

Transfer Costs R837,952.00 **Bond Costs** R80,035.00

These calculations are only a guide. Please ask your conveyancer for exact calculations.

Monthly Rates R1,300

THE TRANQUIL SETTING OFFERS A TRUE ESCAPE INTO NATURE

SOLE MANDATE

This enchanting four-bedroom, three-bathroom timber retreat in the wholesome community of Keurboomstrand is a true nature lover's paradise. It borders lush indigenous bushveld, where the flutter of loeries and the quiet presence of bushbuck accompany morning coffee on the balcony, overlooking a gorgeous emerald valley with glimpses of the sea. Just a short stroll leads to the golden sands of Keurboomstrand's endless beach, offering a rare harmony of forest tranquillity and coastal splendour.

Features

Pets Allowed Yes

Interior

Bedrooms	4
Bathrooms	3
Kitchens	1
Recep. Rooms	2
Furnished	No

Exterior

Garages	1
Security	No
Pool	No
Views	True

Sizes

Floor Size	300m ²
Land Size	952m ²

Extras

Green Belt Sea North South West Wood Window Fireplace Open Plan Patio Tiled Floors Stove
Balcony Flatlet Workshop Shed Burglar Bars

