



Dirk Green
082 814 4508
dirk.green@seeff.com



Elize Green
072 119 3710
elize.green@seeff.com

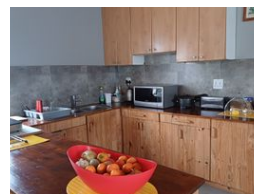
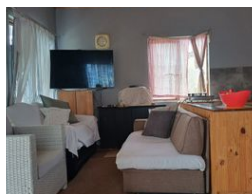
Contact Plettenberg Bay

044 5330311

Sun Centre
CNR Main & Church Street
Plettenberg Bay



Web Ref RLS968300



R980,000

Monthly Bond Repayment R9,784.12
Calculated over 20 years at 10.5% with no deposit.

Transfer Costs R30,502.00 **Bond Costs** R23,335.00
These calculations are only a guide. Please ask your conveyancer for exact calculations.

🏠 3 🚿 1 🚗 1

FAMILY HOME IN KRANSHOEK

Neat family home in Kranshoek which consists of open plan living area, 3 bedrooms and 1 bathroom.

There is an undercover verandah and fairly spacious garden. Call us today

Features

Pets Allowed		Yes			
Interior				Exterior	
Bedrooms	3			Garages	1
Bathrooms	1			Security	No
Kitchens	1			Pool	No
Recep. Rooms	2			Views	False
Furnished	No				
				Sizes	
				Floor Size	120m ²
				Land Size	251m ²

Extras

Level Road West Burglar Bars Aluminium Window Wood Window Breakfast Nook Open Plan
Tiled Floors Partially Fenced

