



**Susan Duncan**  
072 968 0779  
susan.duncan@seeff.com

Contact Plettenberg Bay

044 5330311

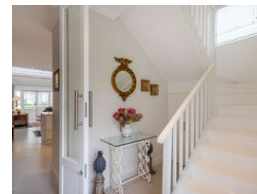
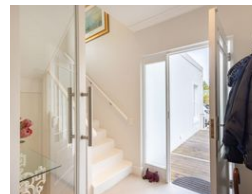
Sun Centre  
CNR Main & Church Street  
Plettenberg Bay

NEW



SOLE MANDATE

Web Ref RLS985915



### R6,450,000

🏠 3 🚗 2 🚗 1

**Monthly Bond Repayment** R65,482.27

Calculated over 20 years at 10.75% with no deposit.

**Transfer Costs** R573,266.00 **Bond Costs** R70,535.00

These calculations are only a guide. Please ask your conveyancer for exact calculations.

**Monthly Levy** R1,221.1 **Monthly Rates** R1,161.7

### RIVER CLUB BEAUTY

EXCLUSIVE SOLE MANDATE

Nestled in the heart of the sought-after River Club, in the popular town of Plettenberg Bay, this charming house is waiting to welcome you. This lovely home features an entrance hall with double glass doors that open into a light-filled, open-plan kitchen and living area. The lounge has French doors on two sides, leading onto a wrap-around covered veranda. The garden offers privacy and tranquillity with a wall and water feature on one side, while the other side of the veranda provides a beautiful view of a tree-filled lawn, which is part of the common area. A cosy fireplace in the lounge is perfect for winter evenings.

Downstairs, you'll find two spacious bedrooms that share a bathroom, with one of the bedrooms opening onto the private patio. A wooden staircase leads to the welcoming main suite...

### Features

#### Interior

Bedrooms	3
Bathrooms	2
Kitchens	1
Recep. Rooms	2
Furnished	No

#### Exterior

Garages	1
Carports / Parkings	1
Security	Yes
Pool	Yes
Views	False

#### Sizes

Floor Size	219m <sup>2</sup>
Land Size	255m <sup>2</sup>

#### Extras

Level Road Mountain View North Modern Skylight Window Wood Window Fireplace Open Plan  
Patio Communal Courtyard Immaculate Condition Water Feature Fan Entrance Hall Squash  
Court Tennis Court Covered Patio Dishwasher Connection Gas Hob Security Estate Under  
Counter Oven

