



Andrew Iles
Candidate Property Practitioner
Registered with PPRA (FFC 202 371 475 87)
082 462 0432
andrew.iles@seeff.com



Helene Gardner
081 053 1911

helene.gardner@seeff.com

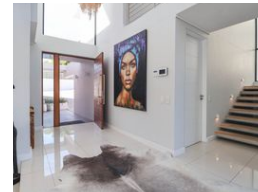
Contact Plettenberg Bay

044 5330311

Sun Centre
CNR Main & Church Street
Plettenberg Bay



Web Ref RLS957092



R19,900,000

4 4.5 2

Monthly Bond Repayment R205,405.49
Calculated over 20 years at 11% with no deposit.

Transfer Costs R2,259,371.00 **Bond Costs** R132,285.00

These calculations are only a guide. Please ask your conveyancer for exact calculations.

Monthly Rates R1,200

HIGH END MODERN HOME WITH SPECTACULAR SEA VIEWS

Built on a panhandle stand in 2020-2021 specifically for its German owners, this high-end home has very clean lines and modern finishes. Overlooking a green belt and the Bowtie Private Estate, this magnificent home boasts breathtaking views of the ocean and the Tsitsikamma mountains. And despite its tranquil location, it's an easy walk or a very short drive to the restaurants and coffee shops in the center of Plett.

As you enter the high-volume entrance hall, you are greeted by tiled floors, expansive windows, and an abundance of natural light. An internal door leads from the entrance hall into the large double garage, which houses the inverter & battery system that combines with the bank of solar panels located on the roof.

Turning to your right from the entrance hall, you walk down two steps into the downstairs lounge...

Features

Pets Allowed Yes

Interior

Bedrooms	4
Bathrooms	4.5
Kitchens	1
Recep. Rooms	3
Furnished	No

Exterior

Garages	2
Carports / Parkings	2
Security	Yes
Pool	Yes
Views	True

Sizes

Floor Size	465m ²
Land Size	1,003m ²

Extras

Below Road Mountain View Sea North East Green Belt Modern Aluminium Window Breakfast Nook Granite Tops Laundry Scullery Stove Balcony Blinds Fireplace Open Plan Tiled Floors Storeroom Immaculate Condition Irrigation System Landscaped Air Conditioner Alarm System Electric Fencing Electric Garage Electric Gate Totally Fenced Built In Braai Entrance Hall Satellite Dish

