



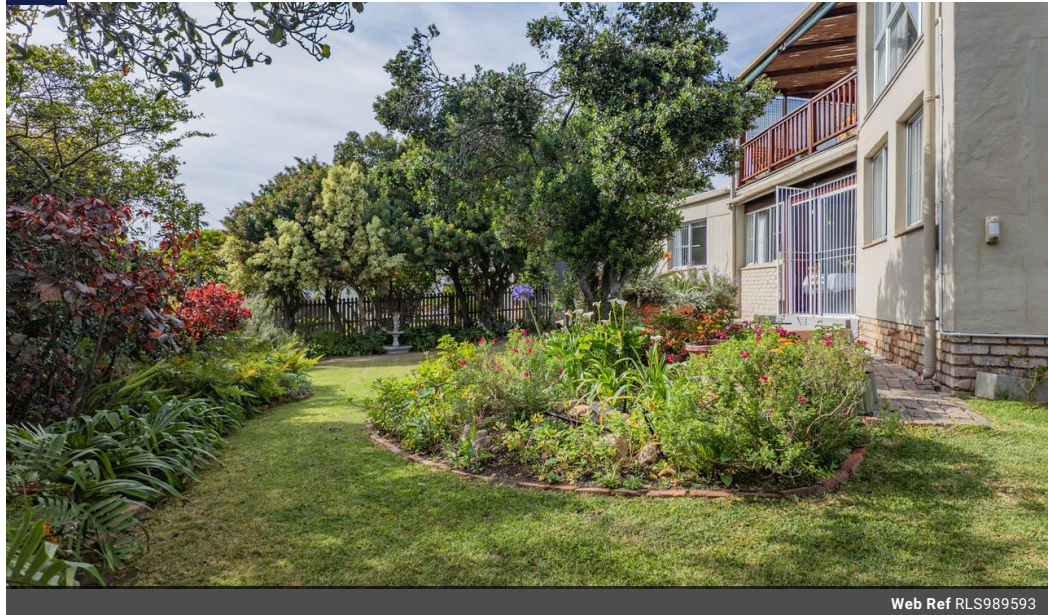
**Susan Duncan**  
072 968 0779  
susan.duncan@seeff.com

Contact Plettenberg Bay

044 5330311

Sun Centre  
CNR Main & Church Street  
Plettenberg Bay

NEW



Web Ref RLS989593



**R4,750,000**

🏠 3 🛏 2.5 🚗 2

**Monthly Bond Repayment** R47,423.04

Calculated over 20 years at 10.5% with no deposit.

**Transfer Costs** R372,848.00 **Bond Costs** R59,150.00

These calculations are only a guide. Please ask your conveyancer for exact calculations.

### SUNNY HOME IN QUIET CUL-DE-SAC

#### JOINT MANDATE

New to the market. This welcoming, north-east-facing house is nestled in a quiet cul-de-sac and offers a truly inviting living experience. A staircase leads to the front door on the top floor. Views of the Tsitsikamma mountains greet you as you enter the open-plan living area. Step out onto the covered patio, and you'll discover a delightful surprise: distant sea views.

The open-plan living area is spacious and sunny, and features a fireplace for those chilly winter evenings. The kitchen is equipped with ample cupboard space, granite countertops, and a convenient dishwasher connection. The star of the show is the covered patio, and this would undoubtedly be the space where you and your friends and family would gather, with the beautiful mountain and sea vistas as a backdrop. For your convenience, a guest...

### Features

**Pets Allowed** Yes

#### Interior

Bedrooms	3
Bathrooms	2.5
Kitchens	1
Recep. Rooms	2
Furnished	No

#### Exterior

Garages	2
Security	No
Pool	No
Views	False

#### Sizes

Land Size	877m²
-----------	-------

#### Extras

Open Plan Burglar Bars Partially Fenced Security Gate Electric Garage Cul\_De\_Sac North East Mountain View Carpets Tiled Floors Aluminium Window Guest Toilet En Suite Extractor Fan Granite Tops Stove Balcony Fireplace Covered Patio

