



**Daniel Van Renen**  
082 883 6271  
daniel.plett@seeff.com

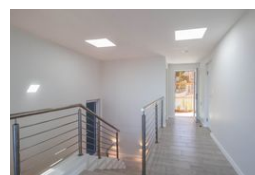
Contact Plettenberg Bay

044 5330311

Sun Centre  
CNR Main & Church Street  
Plettenberg Bay



Web Ref RLS960603



### R8,600,000

4 4.5 2

**Monthly Bond Repayment** R88,768.20  
Calculated over 20 years at 11% with no deposit.

**Transfer Costs** R821,214.00 **Bond Costs** R80,035.00  
These calculations are only a guide. Please ask your conveyancer for exact calculations.

**Monthly Levy** R1,800 **Monthly Rates** R1,134

### NEWLY BUILT HOME IN WHALE ROCK HEIGHTS

#### JOINT MANDATE

This exquisite property seamlessly blends coastal charm with modern elegance, meticulously crafted with an emphasis on detail, high-quality finishes, and thoughtfully designed spaces.

Stepping into the entrance hall one is bathed in natural light from a strategically placed skylight. The double garage offers ample space for vehicles, tools, and all your outdoor gear. A captivating flow unfolds before you. The open-concept kitchen, dining, and living areas seamlessly connect, each boasting breathtaking vistas of the bay. Extend your living space onto the expansive balcony, complete with a built-in braai, perfect for creating unforgettable moments. This level also features a bedroom with an adjacent bathroom, offering both style and functionality.

A cleverly designed staircase guides you to the lower ground...

### Features

**Pets Allowed** Yes

#### Interior

Bedrooms	4
Bathrooms	4.5
Kitchens	1
Recep. Rooms	2
Furnished	No

#### Exterior

Garages	2
Carports / Parkings	2
Security	Yes
Pool	Yes
Views	True

#### Sizes

Floor Size	316m <sup>2</sup>
Land Size	335m <sup>2</sup>

#### Extras

Mountain View Sea Modern Aluminium Window Laundry Scullery Open Plan Built In Braai  
Fireplace Irrigation System Water Tanks gas geyser Solar System

